

# WALL STREET TODAY™ A product of AccuWeather.com

**Thursday - February 1, 2001**

**"Today's Closing Market Prices Today"**

**Thursday's Key Indicators**

	DJIA	DJ Trans	DJ Util	NASDAQ	S&P 500	AMEX
	+95.86	+20.06	-2.91	+9.93	+7.44	-1.29
Close	10983.22	3127.82	369.41	2782.66	1373.45	928.83
High	10983.80	3129.06	372.21	2796.89	1373.45	930.99
Low	10864.17	3091.99	366.46	2742.44	1359.34	923.55
% Chg	+0.87%	+0.64%	-0.79%	+0.36%	+0.54%	-0.14%

**New York Stock Exchange**

Advances: 1,699    Declines: 1,391    Up Vol: 613,396,032    Down Vol: 457,784,000    Total Volume: 1,082,610,048

**Widely Held Stocks**

	Close	Chg		Close	Chg
IBM Corp	114.1094	+2.1094	Cisco Systems	38 <sup>5</sup> / <sub>16</sub>	+ 7/ <sub>8</sub>
Johnson & John	93.6680	+0.5391	Home Depot	48.7891	+0.5898
E M C Corp	77.5977	+1.6094	America Online	49.8477	-2.7109
Merck & Co	83.8438	+1.6641	Sun Microsys	31	+ 7/ <sub>16</sub>
Exxon-Mobil	83.5000	-0.6484	Intel	37 <sup>11</sup> / <sub>16</sub>	+ 1 <sup>1</sup> / <sub>16</sub>
Microsoft	62	+ 15/ <sub>16</sub>	Walt Disney Co	31.4883	+1.0391
Wal-Mart	55.1484	-1.6484	Oracle Corp	29 <sup>15</sup> / <sub>16</sub>	+ 13/ <sub>16</sub>
SBC Com	50.5586	+2.2109	AT&T Corp	24.4063	+0.4180
General Elec	46.1992	+0.2227	Lucent Tech	18.9766	+0.3789

**Commodities/Futures**

	Month	Open	High	Low	Settle	Chg
Gold	Apr	270.90	270.90	270.80	270.90	+ 0.20
Silver	May	487.00	487.00	481.00	485.30	- 0.50
Copper	May	84.60	84.60	84.60	84.60	+ 0.25
Wheat	May	283.40	284.60	282.00	282.20	- 2.60
Corn	May	217.00	220.20	217.00	219.20	+ 2.20
Soybeans	May	465.40	471.00	465.00	469.60	+ 3.60
World Sugar	May	9.61	10.07	9.58	10.03	+ 0.40
Coffee	May	66.90	67.70	66.25	67.40	+ 0.95
Cocoa	May	1028	1060	1022	1058	+ 29
Live cattle	Apr	77.00	78.32	77.00	78.30	+ 1.48
Live hogs	Apr	57.90	59.05	57.80	58.80	+ 1.65
Unleaded gas	May	0.8660	0.8765	0.8600	0.8765	+0.0162
Heating oil	Jan	0.9000	0.9350	0.8950	0.9066	+0.0120
Natural gas	May	5.350	5.985	5.250	5.500	+0.330
Lt swt crude	May	27.72	28.45	27.35	28.42	+ 1.01
CRB index	Apr	223.10	225.25	223.10	224.80	+ 1.80

**Most Active Shares**

	Vol(100)	Close	Chg
<b>New York Stock Exchange</b>			
America Online	289000	49 <sup>1</sup> / <sub>2</sub>	-3
Gen Elec Co	148000	46 <sup>1</sup> / <sub>8</sub>	+ 1/ <sub>8</sub>
Lucent	120000	18 <sup>29</sup> / <sub>32</sub>	+ 79/ <sub>256</sub>
Micron Tech	120000	42 <sup>7</sup> / <sub>8</sub>	-2 <sup>7</sup> / <sub>8</sub>
AT&T Corp	117000	24 <sup>97</sup> / <sub>256</sub>	+ 25/ <sub>64</sub>
Avd Micro	116000	25 <sup>53</sup> / <sub>64</sub>	+1 <sup>59</sup> / <sub>256</sub>
Kmart Corp	114000	9 <sup>29</sup> / <sub>128</sub>	+ 61/ <sub>128</sub>
NOK	96100	34 <sup>3</sup> / <sub>8</sub>	...
Motorola Inc	94800	22 <sup>23</sup> / <sub>256</sub>	- 23/ <sub>32</sub>
Compaq	94300	23 <sup>1</sup> / <sub>2</sub>	- 53/ <sub>256</sub>

**NASDAQ**

Intel Corp.	423000	37 <sup>5</sup> / <sub>8</sub>	+ 5/ <sub>8</sub>
Cisco Sys	408000	38 <sup>1</sup> / <sub>4</sub>	+ 3/ <sub>4</sub>
Sun Microsys	347000	30 <sup>15</sup> / <sub>16</sub>	+ 3/ <sub>8</sub>
Oracle Systems	332000	30 <sup>5</sup> / <sub>32</sub>	+1 <sup>1</sup> / <sub>32</sub>
Microsoft	304000	62	+ 7/ <sub>8</sub>
NTAP	297000	46 <sup>3</sup> / <sub>8</sub>	-7 <sup>1</sup> / <sub>4</sub>
FLEX	269000	39	+ 7/ <sub>8</sub>
Dell Computer	260000	25 <sup>3</sup> / <sub>4</sub>	- 3/ <sub>8</sub>
JDSU	239000	56 <sup>1</sup> / <sub>4</sub>	+1 <sup>3</sup> / <sub>8</sub>
MCI Worldcom	207000	22 <sup>1</sup> / <sub>4</sub>	+ 11/ <sub>16</sub>

**American Stock Exchange**

Nabors Industs	24100	58 <sup>3</sup> / <sub>8</sub>	- 5/ <sub>8</sub>
RPW	18100	3 <sup>51</sup> / <sub>256</sub>	- 13/ <sub>256</sub>
XLK	14200	37 <sup>3</sup> / <sub>8</sub>	+ 1/ <sub>8</sub>
Devon Enrgy	13400	53 <sup>1</sup> / <sub>2</sub>	-1 <sup>1</sup> / <sub>4</sub>
Grey Wolf Inc	12700	5 <sup>199</sup> / <sub>256</sub>	- 95/ <sub>256</sub>
Tubos de Acero	11500	15 <sup>3</sup> / <sub>4</sub>	- 1/ <sub>2</sub>
First Austral	11200	4 <sup>1</sup> / <sub>4</sub>	+ 9/ <sub>128</sub>
AAI	10500	9 <sup>217</sup> / <sub>256</sub>	- 17/ <sub>32</sub>
IVAX Corp	7860	34 <sup>1</sup> / <sub>2</sub>	- 1/ <sub>4</sub>
SEV	5490	2 <sup>125</sup> / <sub>128</sub>	- 57/ <sub>256</sub>

**Market Summary**

NEW YORK -(Dow Jones)- Stocks finished higher Thursday with the Dow Jones Industrial Average closing above the 10900 mark.

The Dow Jones Industrial Average rose 95.86 to close at 10983.22. Big Board advancers beat decliners on 1.08 billion shares traded. Broad-market indexes at Thursday's closing: the Nasdaq Composite Index rose 9.93 to close at 2782.66, the S&P 500 rose 7.44 to close at 1373.45 and the Amex fell 1.29 to close at 928.83.

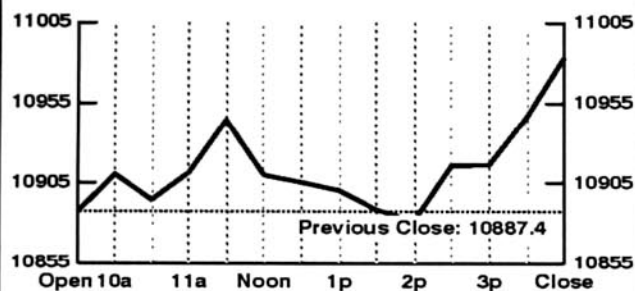
The Dow Jones industrial average rose Thursday as investors bet the Federal Reserve's latest interest rate cut, coupled with more to come, are enough to re-ignite a faltering economy.

With a big, half-percentage-point rate cut on Wednesday -- the second in a month -- the central bank signaled a readiness to keep a decade-long expansion on track.

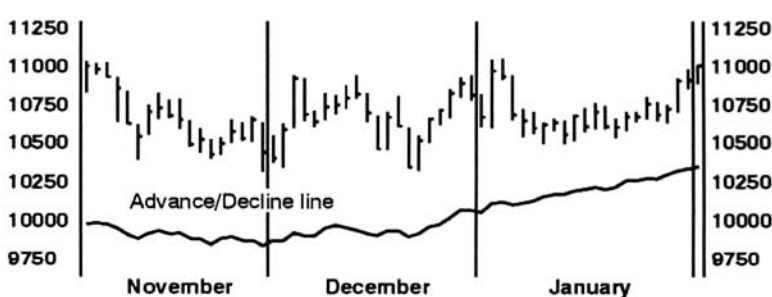
**Interest Rates & Currencies**

	Close	Chg
3 Mo T-Bill	4.62%	+0.02
30 Yr T-Bond	7.51%	+1.02
Italian Lira	0.00049	+0.00000
German Mark	0.4810	+0.0019
French Franc	0.1434	+0.0005
Canadian Dol	0.6697	+0.0020
British Pound	1.4781	-0.0045
Swiss Franc	0.6138	+0.0020
Japanese Yen	0.00866	+0.00007
Mexican Peso	0.1024	+0.0100

**Dow Industrials: Thursday, 30-Minute Intervals**



**Dow Jones Industrial Average Timeline**



ACCUWEATHER™ Your logo here! Everybody -  
Make it a Great Sales Day!

To subscribe to this service, call 800-566-6606.

Wall Street Today™ & Financial Fax Facts™ are trademarks of AccuWeather, Inc. ©2001 Information provided by Data Broadcast, Inc. Information.

**AccuWeather.com**  
Best Weather on the Web